

# Synfire Pro Windows and Dialogs

---

## Table of Contents

<b>Background</b>	<b>3</b>
<b>Arrangement window</b>	<b>4</b>
How to open Arrangement window	4
<b>Instrument Tab</b>	<b>6</b>
Instrument sub-tabs (sound, ranges, misc.)	6
Container Tab	7
Parameter Area	8
Parameter block and parameter inspector tab	8
<b>Progression tab:</b>	<b>9</b>
Progression sub-tabs (harmony, scheme, layer, scale selection preferences)	9
<b>Harmonizer tab</b>	<b>10</b>
Mixer tab:	11
Mixer sub-tabs (sound, ranges, misc.)	11
<b>Launcher window</b>	<b>12</b>
<b>Audio &amp; MIDI Setup window</b>	<b>13</b>
How to open Audio & MIDI Setup window	13
<b>Device Descriptions tab</b>	<b>13</b>
<b>Ports tab</b>	<b>14</b>
Shared rack subtab	14
<b>Global instruments tab</b>	<b>15</b>
Sub-tabs (sound, ranges, mix)	15
<b>Settings tab</b>	<b>16</b>
<b>Preferences Window</b>	<b>16</b>
How to open Preferences window	16
<b>License tab</b>	<b>16</b>
<b>User Interface tab</b>	<b>17</b>
<b>Files tab</b>	<b>17</b>
<b>Defaults tab</b>	<b>18</b>
<b>Scales tab</b>	<b>18</b>
<b>Instruments tab</b>	<b>18</b>

Online tab (how often program looks for updates)	18
<b>Library window</b>	<b>19</b>
Phrase Window	19
Phrase Pool window	20
Palette window	20
Progression window	21
Sketch window	21
Convert to Sketch window	22
Extract Progression window	22
Catalog of Chords and Scales window	23
<b>Dialog Boxes</b>	<b>24</b>
Open dialog (open project, rack, libraries, palettes, phrases, files, ... )	24
Save dialog	24
Open MIDI file dialog	25
Export MIDI file dialog	25
Export MusicXML dialog	26
Export LilyPond dialog	26
Scale Selection Preferences dialog	26
Container Rename dialog	27
Instrument Properties dialog	27
Instrument Articulations dialog	27
Instrument Controllers dialog	28
Circle of Fifths dialog	28
Harmonic Content dialog	28
Fretboard dialog	29
Keyboard dialog	29
Scaleboard dialog	29
Console dialog	30
About dialog	30

## Background

This collection of screen shots of user interface windows and dialog boxes in Synfire Pro Version 1.66 build #3 was captured in a Windows 7 64 bit environment in February 2013 by Robert Wheeler, a Synfire user. The interface may look different in a Macintosh computer environment.

This is not an official Cognitone document. The interface design is copyright Cognitone and is presented here only as a supplement to the official Synfire User Manual and as a learning and reference resource for Synfire users.

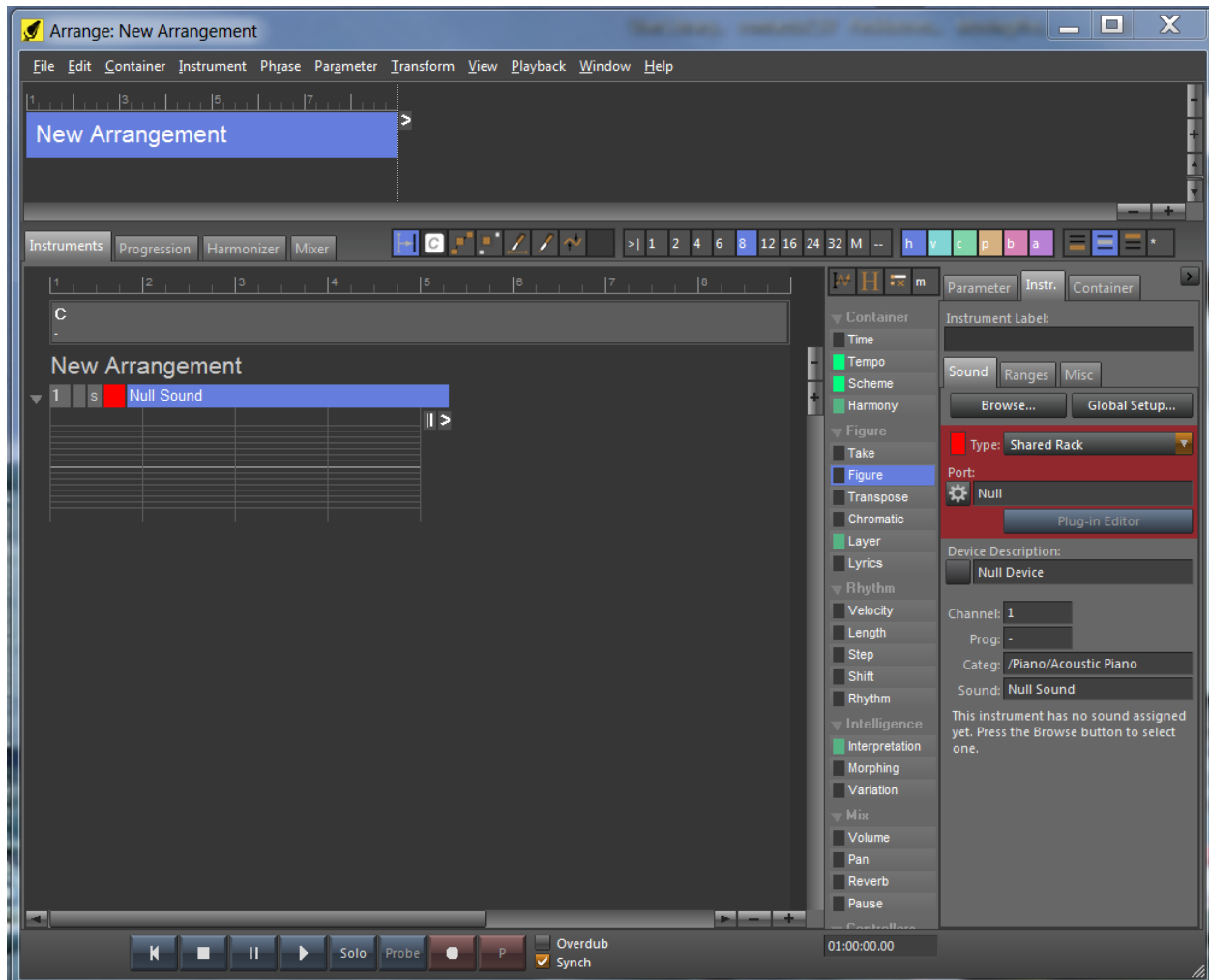
Although most windows and dialog boxes have been captured, this document does not claim to be comprehensive. Many of the windows and dialog boxes can be opened in multiple ways. This document attempts to document some of the ways. Some windows have multiple sub-tabs. Not all sub-tabs are displayed in this document.

Although the interface components are grouped as “windows” and as “dialog” elements, classification has been arbitrary. “Dialog” has been used for interface boxes that don’t have a visible menu in the Windows environment and that have fewer interactive elements. “Window” has been used mostly for interface boxes that do have a visible menu when opened in the Windows environment.

“Ctrl” has been used as an abbreviation for the Windows “control” key. In Macintosh environment this would be the “command” key. The “+” symbol indicates holding down the first key and next key simultaneously. The “>” symbol indicates steps to follow in a sequence of menu choices. The “=>” symbol indicates that the prior menu choice should result in opening the window or dialog box.

## Arrangement window

Empty, ready for entering or importing content:



### How to open Arrangement window

Run Synfire program (arrange is default window when program runs)

Double click program icon =>

OR

Start > Programs > Cognitone > Synfire =>

OR

My computer > C: > Program files (x86) > Cognitone > synfire > synfire.exe =>

OR

Arrange window > File > New > Arrangement (Ctrl + N) =>

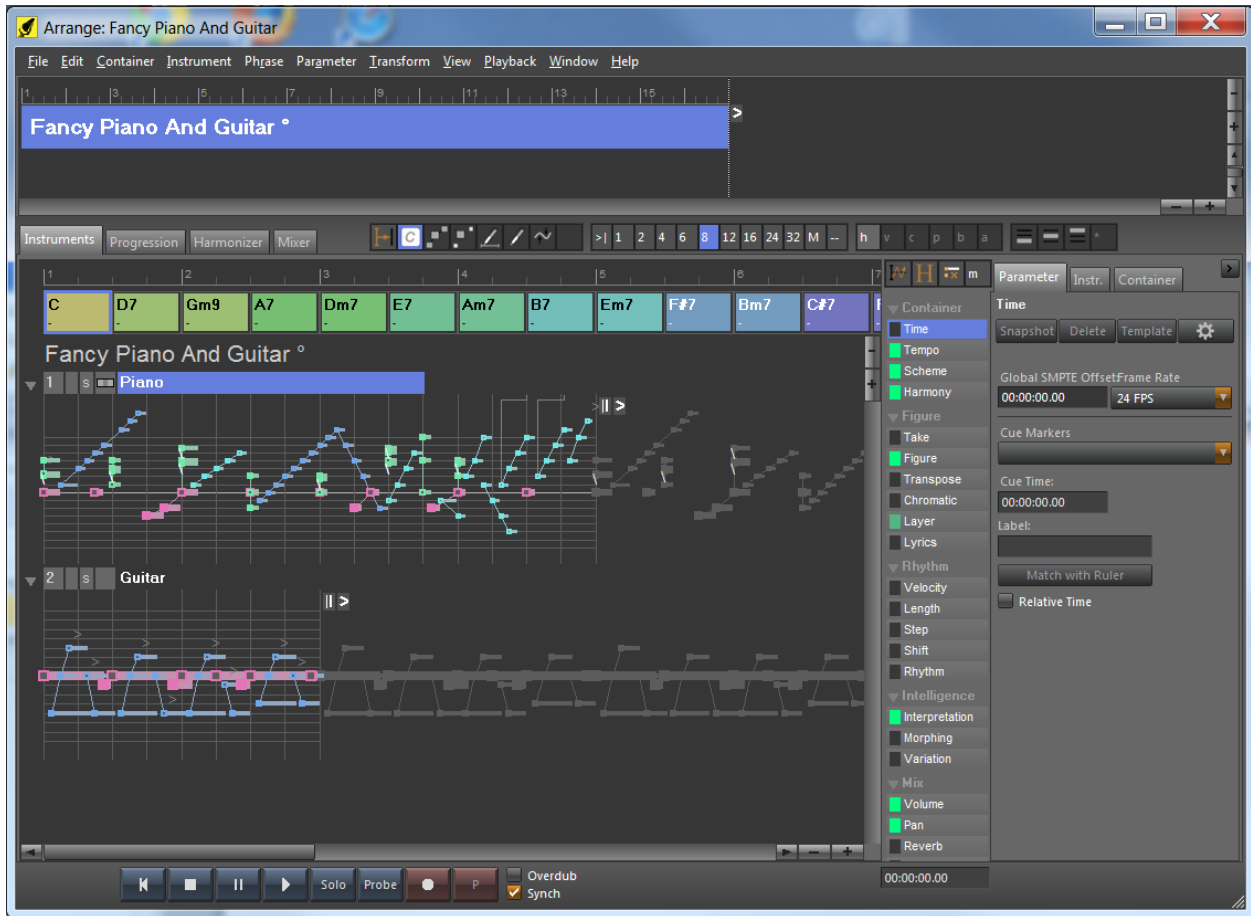
OR

Arrange window > File > Last Used File > click file =>

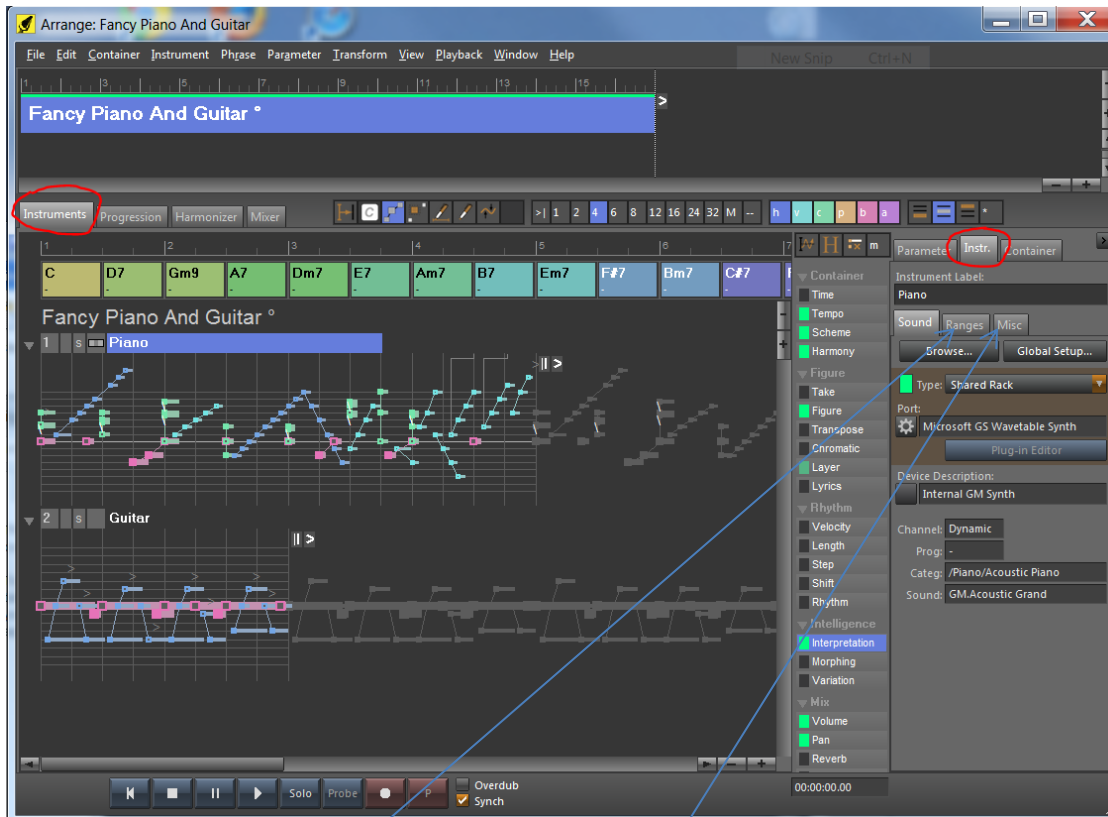
OR

Launcher window > Arrange =>

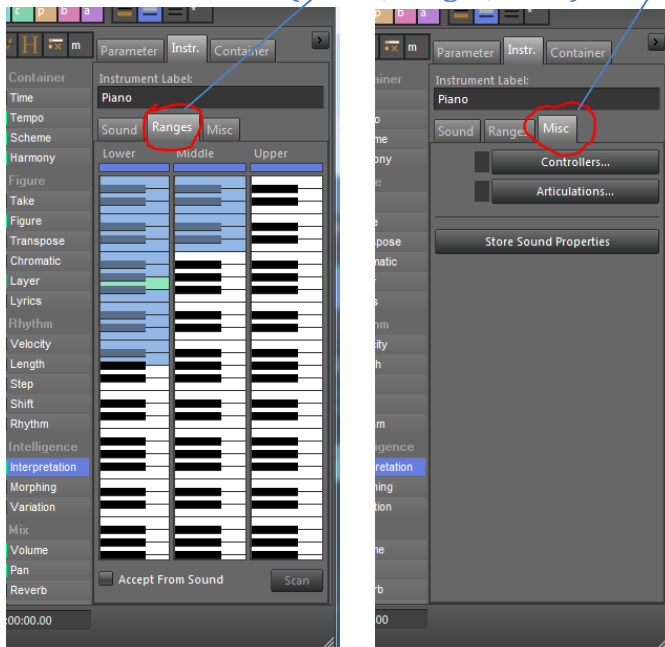
Arrange window displaying example content included with Synfire:



## Instrument Tab



### Instrument sub-tabs (sound, ranges, misc.)



Note: the Ranges function can be found in multiple places:

- Instrument tab
- Mixer tab, instrument sub-tab
- Audio & MIDI setup window, Device descriptions tab
- Audio & MIDI setup window, Global instruments tab
- Instrument properties dialog
- Arrange window buttons
- Scaleboard dialog buttons

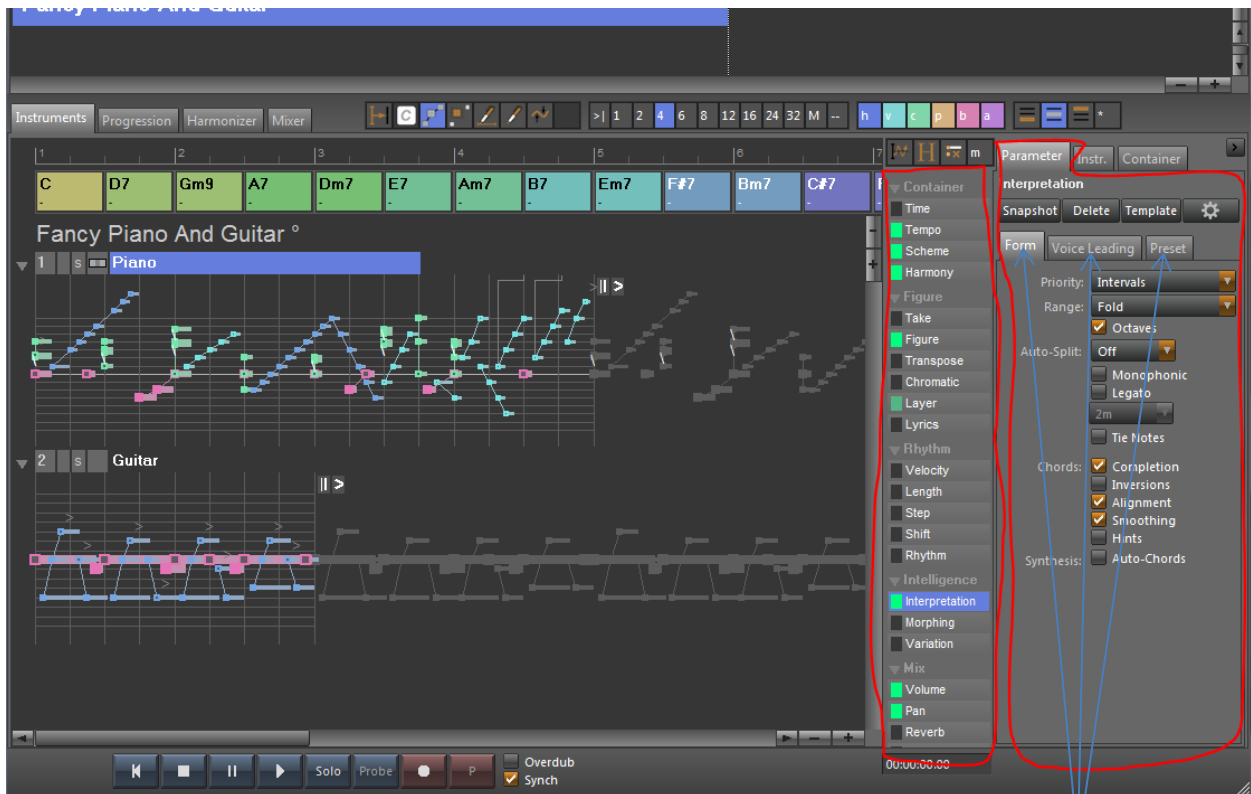


## Container Tab

The screenshot displays a music software interface with a dark theme. At the top, a menu bar includes 'File', 'Edit', 'Container', 'Instrument', 'Phrase', 'Parameter', 'Transform', 'View', 'Playback', 'Window', and 'Help'. Below the menu bar is a timeline with measures 1 through 15. A blue title bar for the piano roll window reads 'Fancy Piano And Guitar °' and contains a yellow text box with the instruction: 'Play around with different symbol types within the same figure and see what their effect is.' Below the piano roll window is a progression bar with chords: C, D7, Gm9, A7, Dm7, E7, Am7, B7, Em7, F#7, Bm7, and C#7. The piano roll itself shows two staves: '1 Piano' and '2 Guitar'. The piano roll contains various musical symbols and lines. On the right side, a parameter panel is open, showing a list of parameters: Time, Tempo, Scheme, Harmony, Figure, Rhythm, Intelligence, Mix, Controllers, Custom, and Audio. The 'Container' tab is selected and highlighted with a red circle. The parameter panel also shows 'Name: Fancy Piano And Guitar', 'Offset: 0m', and 'Length: 16m'. A 'Comments' section at the bottom of the parameter panel contains the same instruction as the yellow text box: 'Play around with different symbol types within the same figure and see what their effect is.'

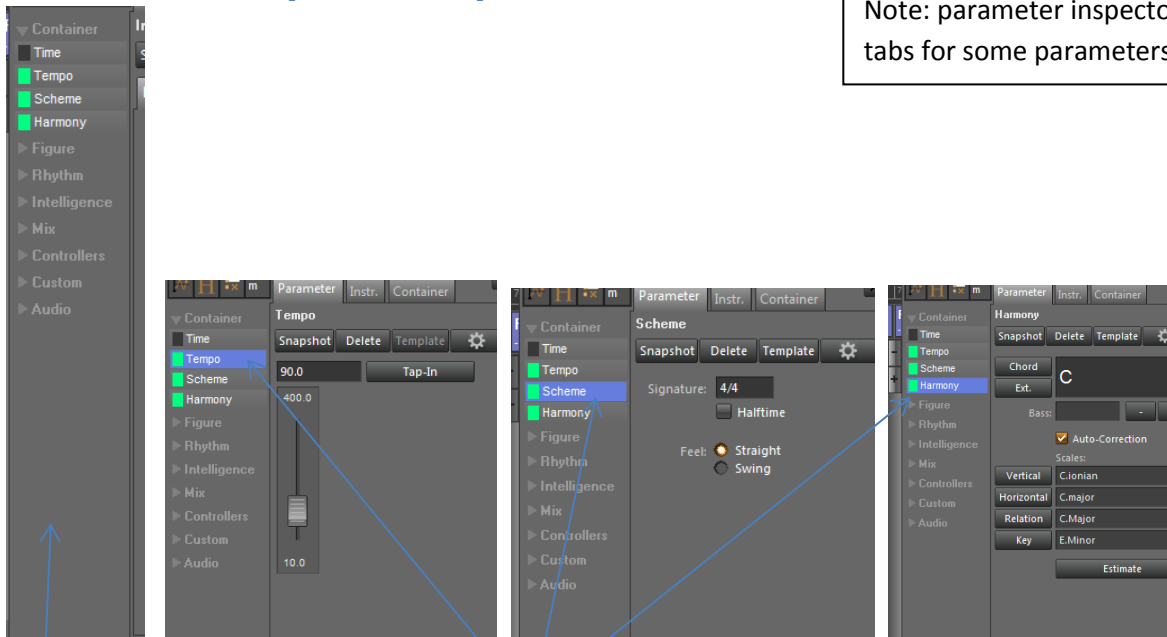
## Parameter Area

The parameter area consists of the parameter block and the parameter inspector.



## Parameter block and parameter inspector tab

Note: parameter inspector has sub-tabs for some parameters.



Parameter block sections expand or collapse by click on section header; use mouse wheel to scroll parameter block when necessary. Inspector content varies depending on parameter selected.



## Progression tab:

**Base Progression**

1	2	3	4
C	D7	Gm9	A7
5	6	7	8
Em7	F#7	Bm7	C#7
9	10	11	12
G#m7	A#	D#m7	F7
A#m9	C7	Fm7	G7

**Chord: C**  
 Vertical: C Ionian  
 Horizontal: C major  
 Bass: -  
 Relation: C Major  
 Global: E Minor  
 Numeral: VI  
 Function: tG, sP  
 Extensions: (add2) (add4) 6 maj7 (add9)  
 6(add4) maj7(add4) 6(add9) maj7(9) maj7(13)

## Progression sub-tabs (harmony, scheme, layer, scale selection preferences)

**Signature:** Rows: 3, Bars: 4, Length: 12/1

**Superimposition Layer Name:** Base Progression  
**Superimposed Chord:**  
**Superimposed Scale:**  
**Extension Limit:** 0

Prefer Standard Modes  
 Include Horizontal Scale Variants  
 Include Alternative Scale Sets

Create ad-hoc Horizontal Scales  
 Smooth Transitions

Traditional Alternative Strict Apply

## Harmonizer tab

Arrange window, click Harmonizer tab

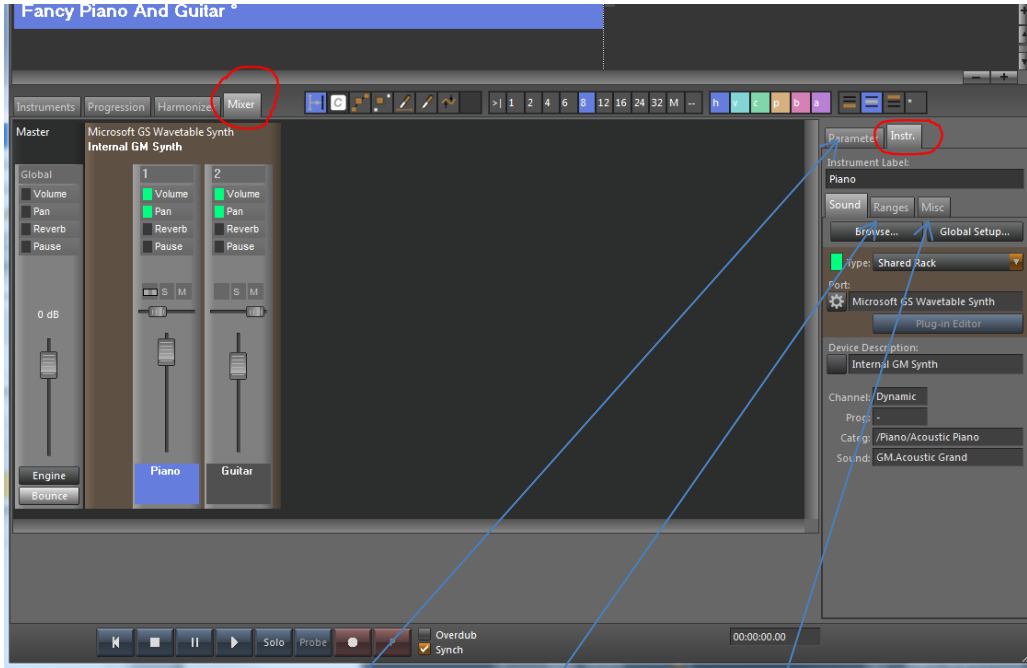
OR

Menu, Phrase > Harmonize => (caution, this approach opens tab, not separate window)

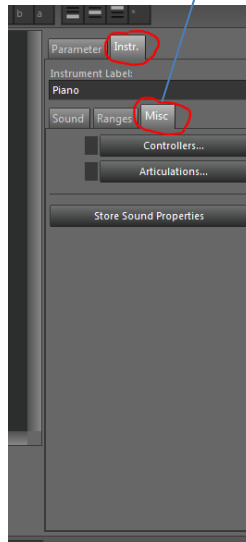
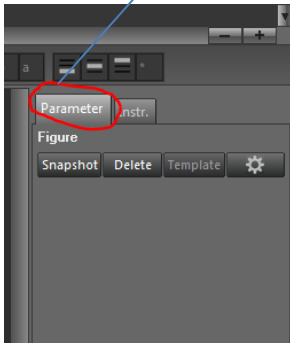
The screenshot shows the Harmonizer tab in a music software interface. The title bar reads "Fancy Piano And Guitar". The interface is divided into several sections:

- Chord Progression:** A sequence of chords: C, D7, Gm9, A7, Dm7, E7, Am7, B7, Em7, F#7.
- Chord Wheel:** A circular diagram of 24 chords, with C major highlighted in green.
- Settings:** Key: E:Minor, Transitions: Search, Style: Generic, Resolution: 1/32, Shortest: 1/2.
- Chord Suggestions:** A list of suggested chords.
- Changes:** Options for Retain Harmony, Match Neighborhood, and Optimize Scales.
- Preview Mix:** Sliders for M, C, and B.
- Chord Info:** Chord: C, Vertical: C:ionian, Horizontal: C:major, Bass: -, Relation: C:Major, Global: E:Minor, Numeral: VI, Function: tG, sP, Extensions: (add2) (add4) 6 maj7 (add9) 6(add4) maj7(add4) 6(add9) maj7(9) maj7(13).
- Keyboard:** A piano keyboard with notes highlighted in green.
- Bottom Bar:** Playback controls (Solo, Probe, P, Overdub, Synch) and a timer (00:00:00.00).

## Mixer tab:

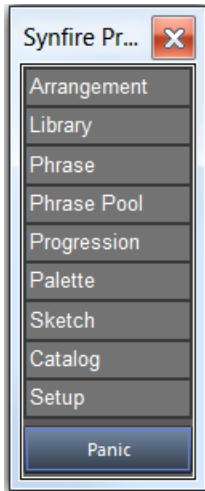


## Mixer sub-tabs (sound, ranges, misc.)



## Launcher window

Menu > Window > Launcher =>



## Audio & MIDI Setup window

### How to open Audio & MIDI Setup window

Ctrl + Shift + A

OR

Launcher window, [Setup] =>

OR

Menu, Playback > Audio & MIDI Setup ... =>

OR

Preferences window, Instruments Tab, Audio & MIDI Setup section, [Open Setup Window] =>

OR

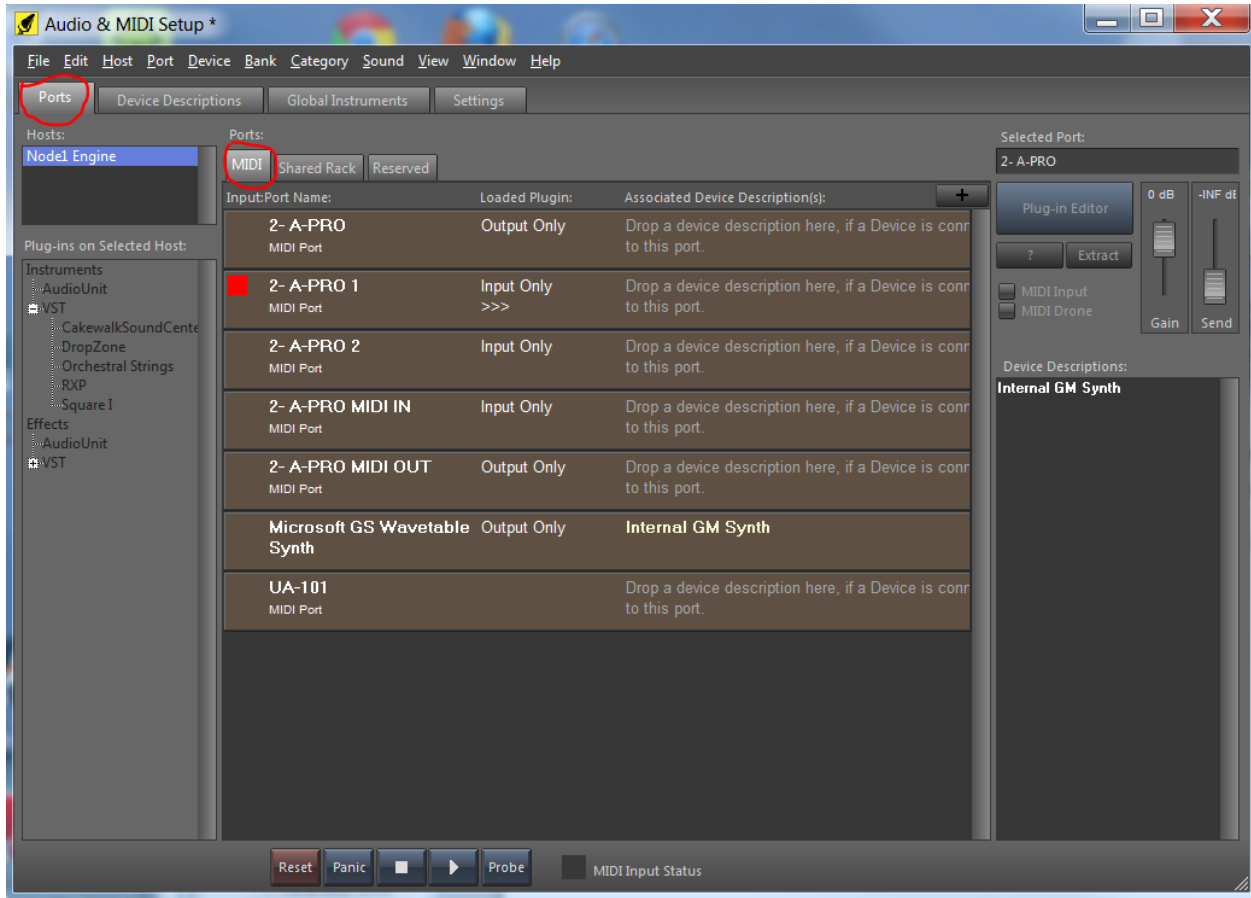
Catalog window > Playback > Audio & MIDI Setup ... =>

### Device Descriptions tab

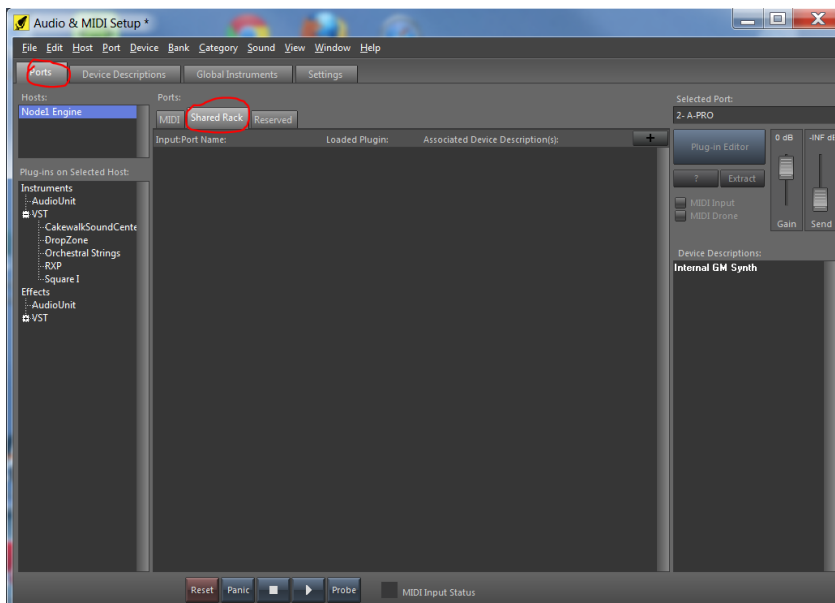


## Ports tab

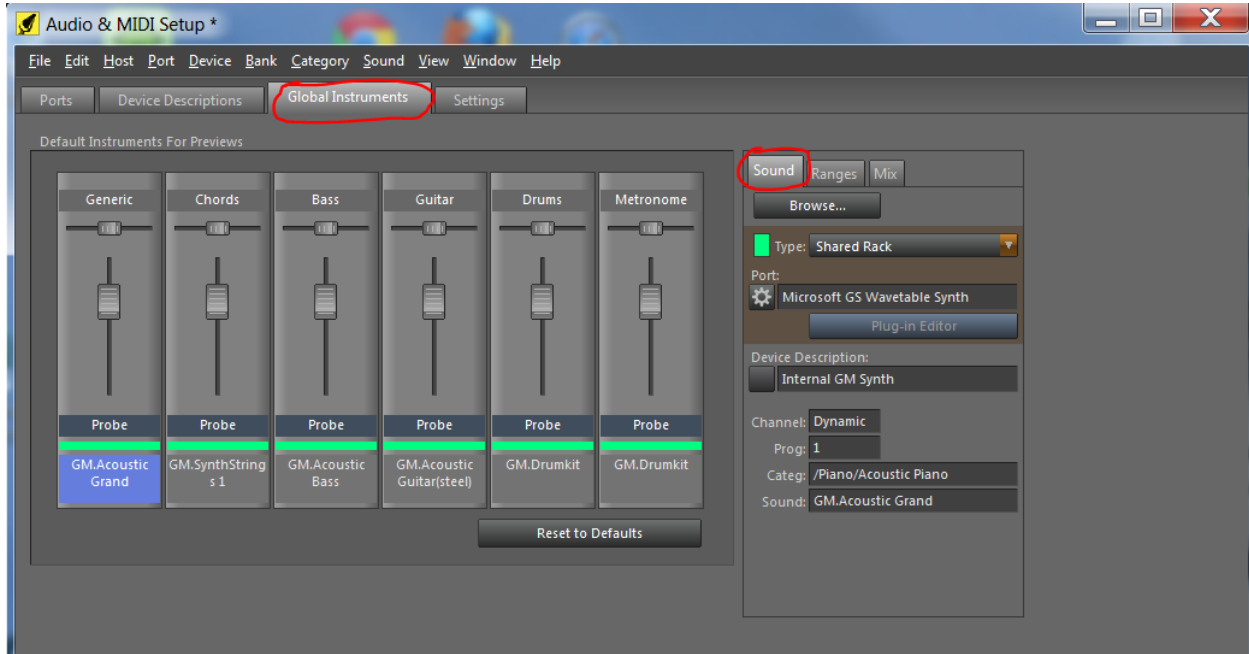
Content displayed will depend on attached equipment and installed plug-ins.



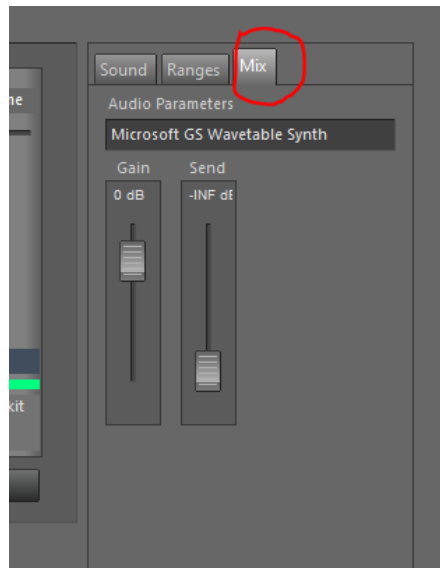
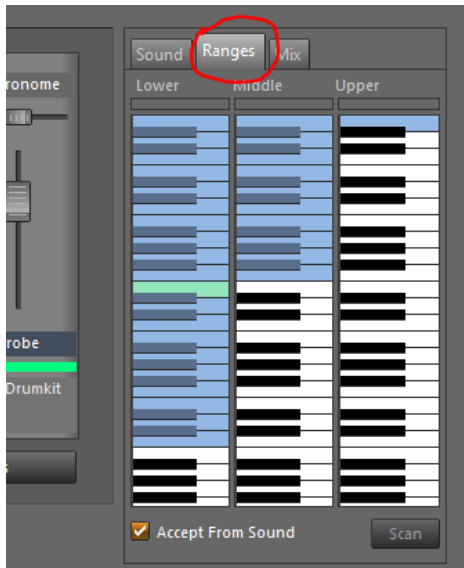
## Shared rack subtab



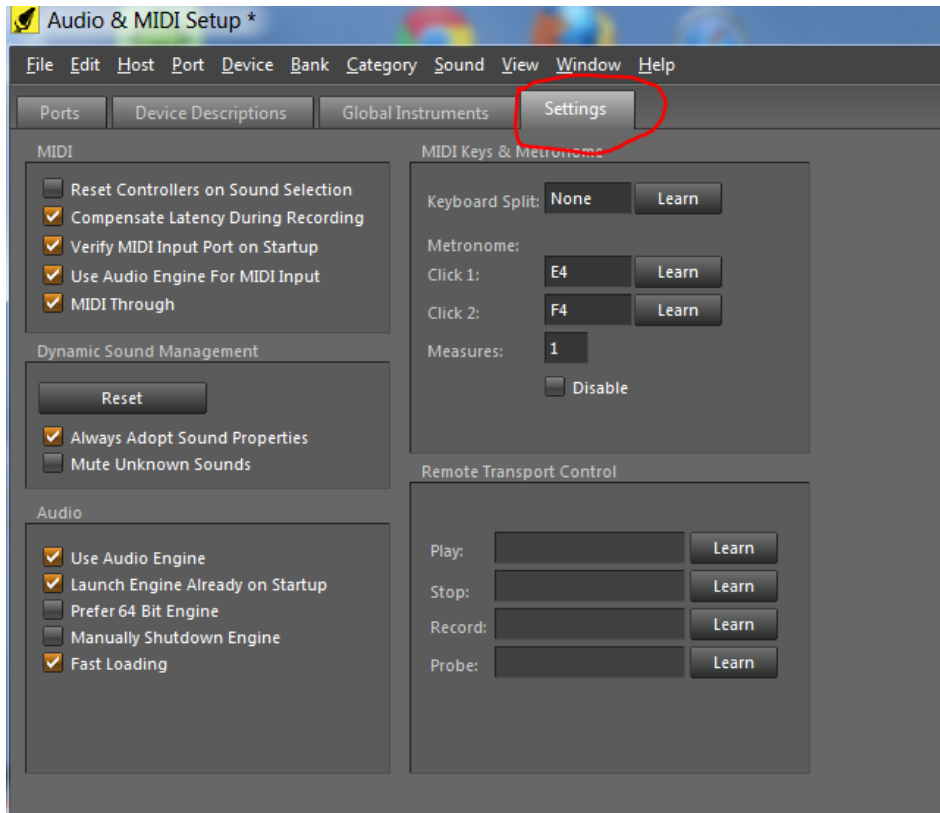
## Global instruments tab



## Sub-tabs (sound, ranges, mix)



## Settings tab

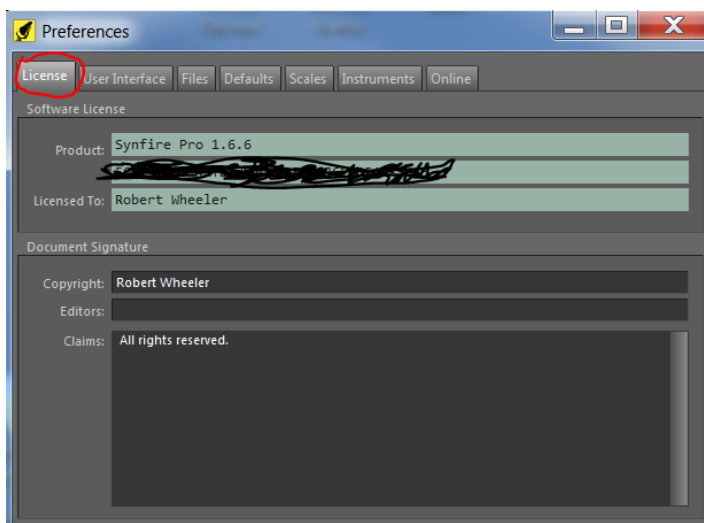


## Preferences Window

### How to open Preferences window

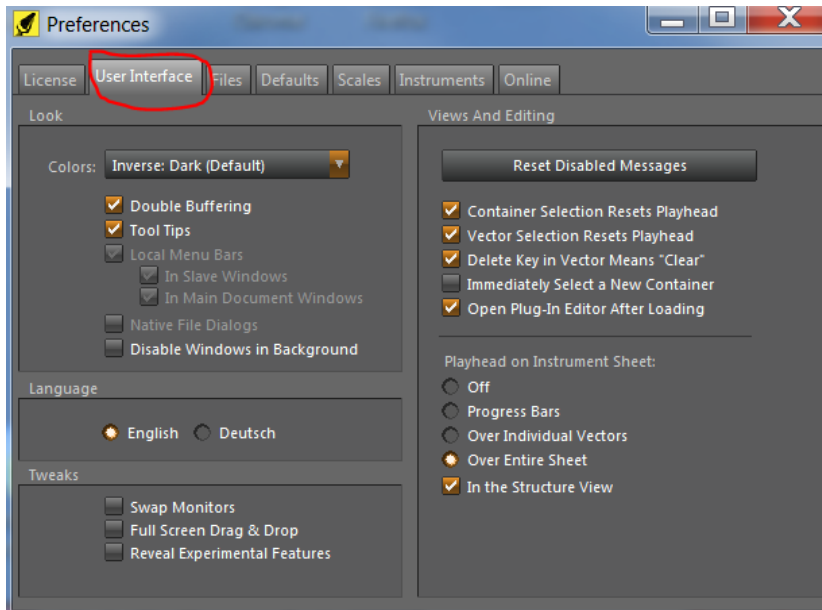
Menu, Edit > Preferences => Tabs: License, User interface, Files, Defaults, Scales, Instruments, Online

## License tab

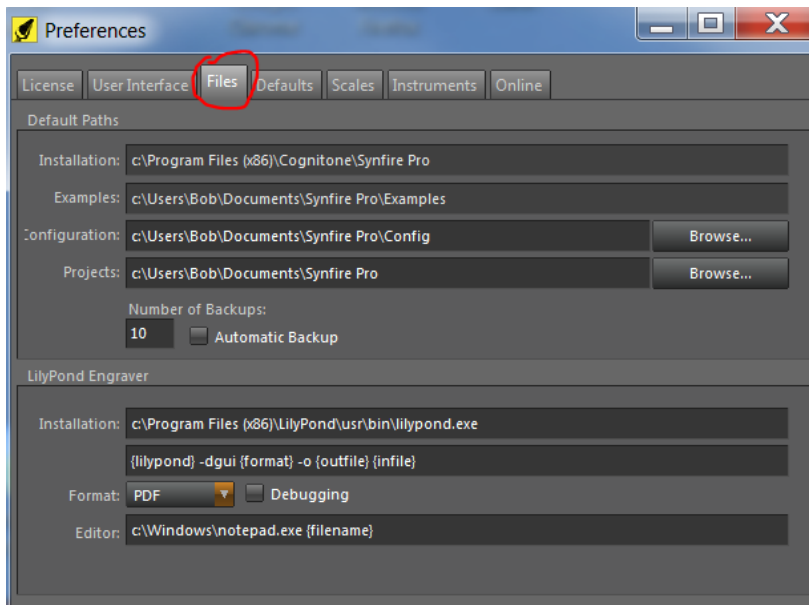




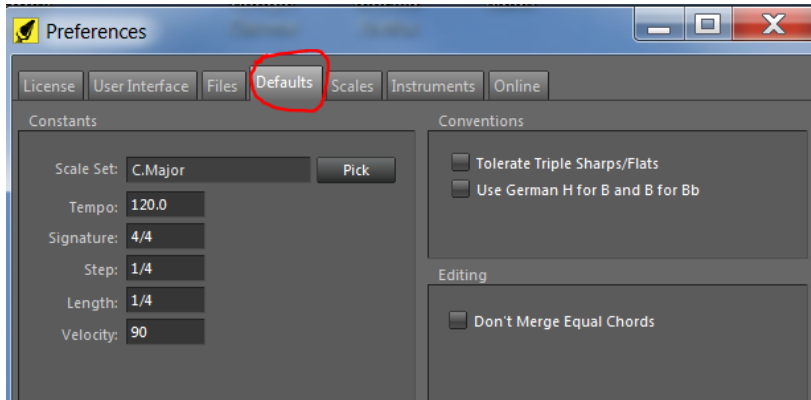
## User Interface tab



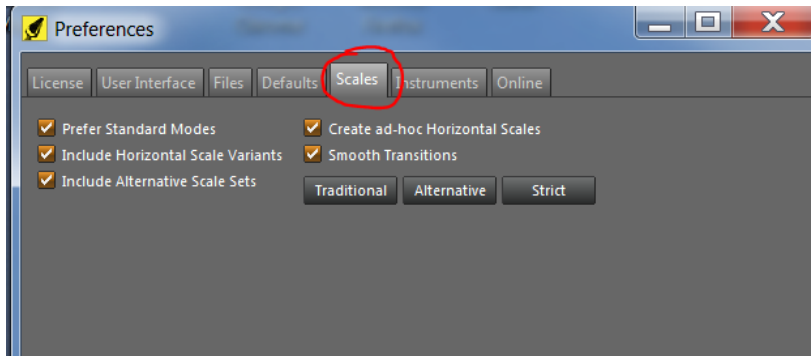
## Files tab



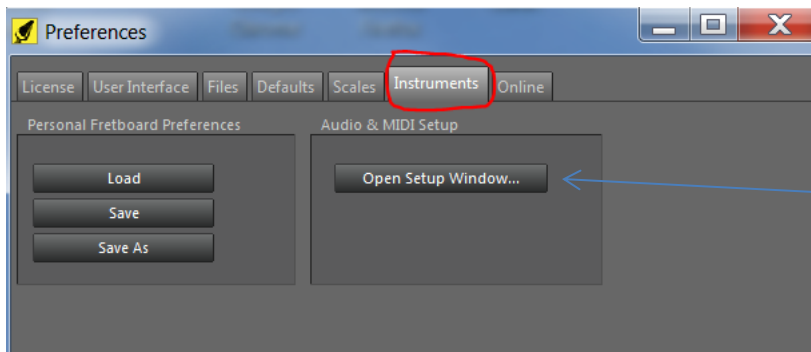
## Defaults tab



## Scales tab

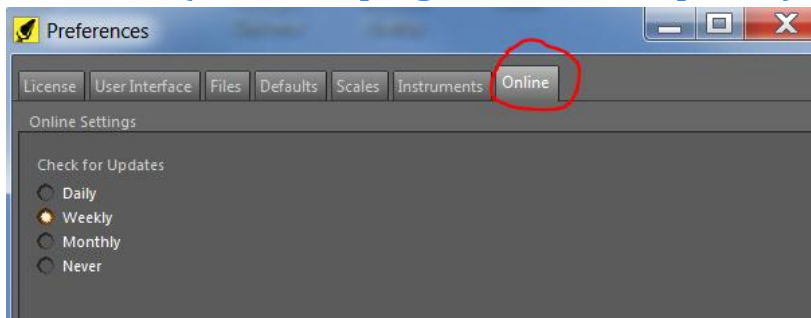


## Instruments tab



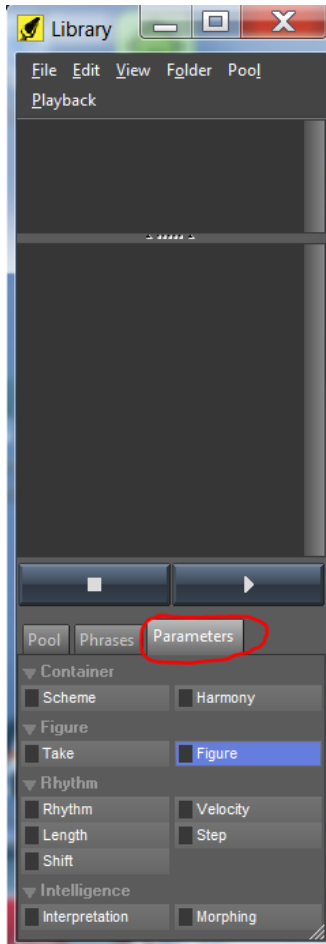
Note: opens Audio & MIDI Setup window

## Online tab (how often program looks for updates)



## Library window

Menu, File > New > Library

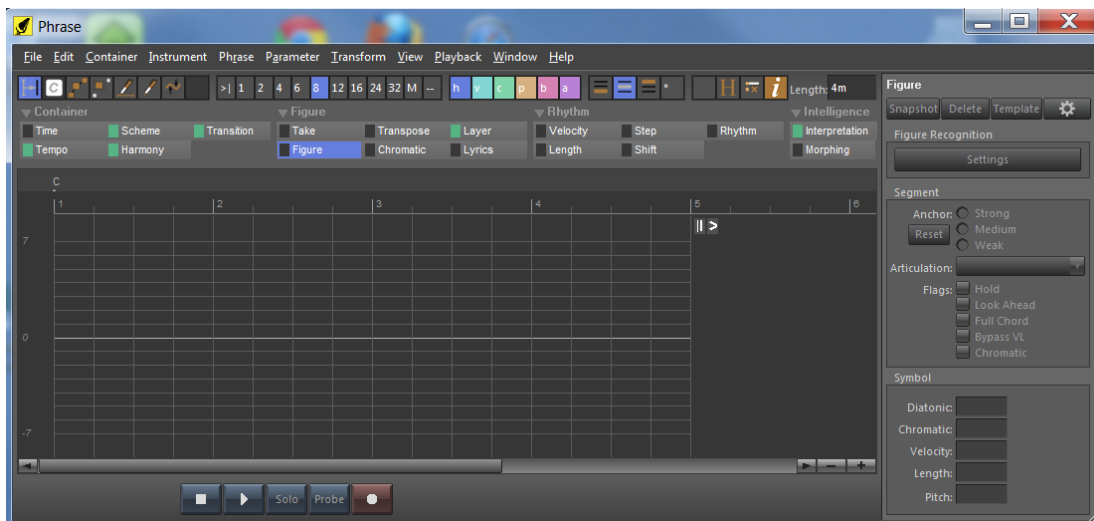


## Phrase Window

Menu, File > New > Phrase =>

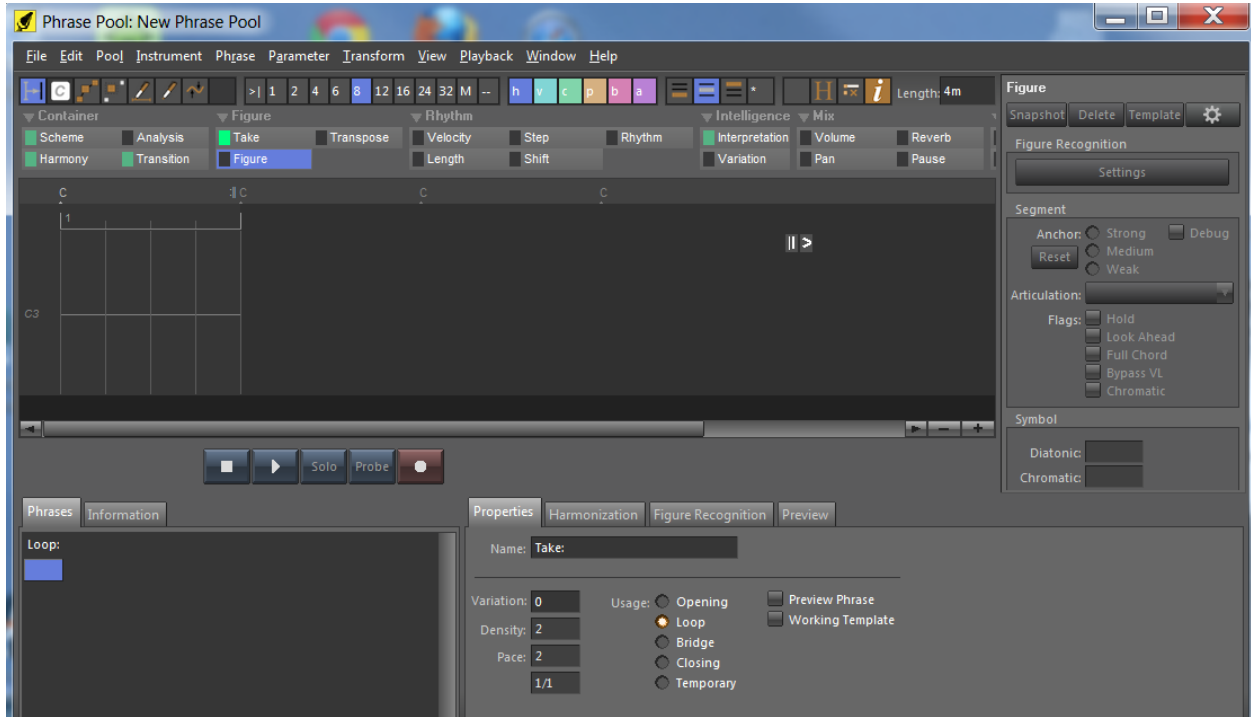
OR

Menu, File > Convert > Extract Phrase =>



## Phrase Pool window

Menu, File > New > Phrase Pool =>



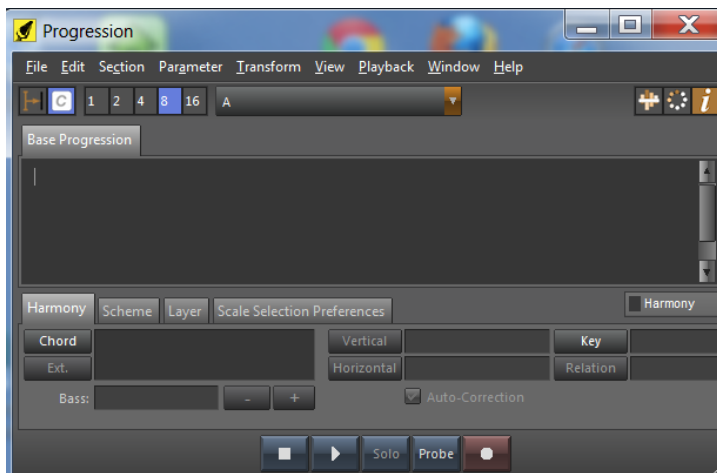
## Palette window

Menu, File > New > Palette =>



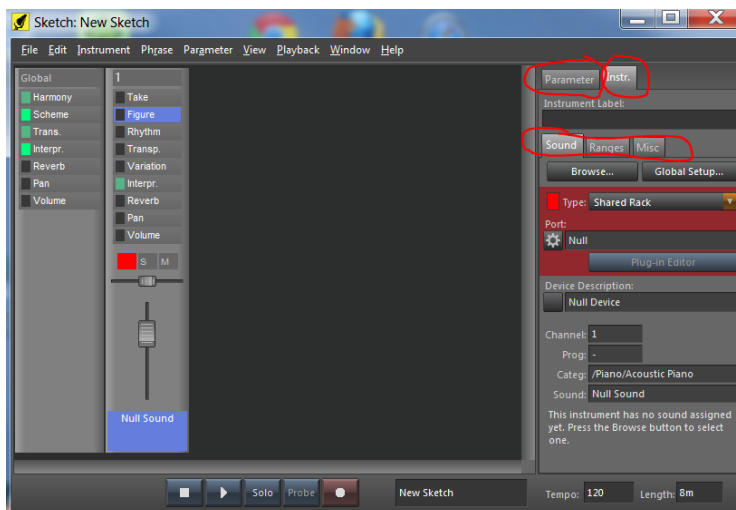
## Progression window

Menu, File > New > Progression =>



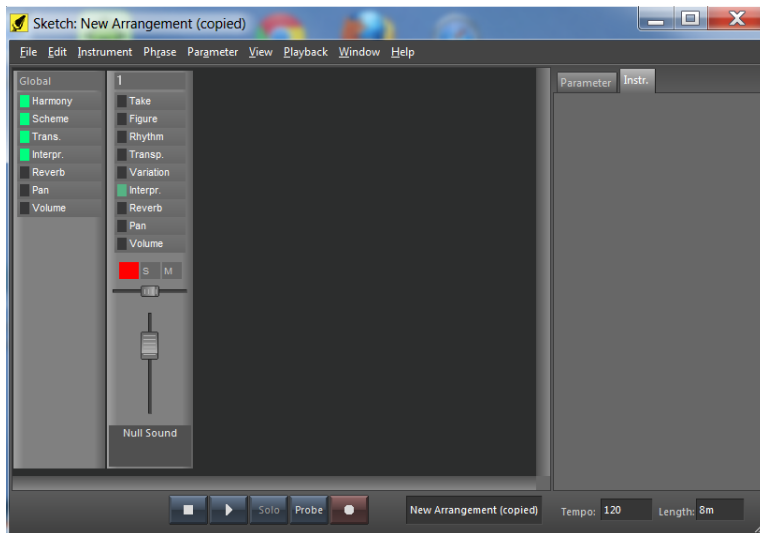
## Sketch window

Menu, File > New > Sketch =>



## Convert to Sketch window

Menu, File > Convert > Create Sketch =>



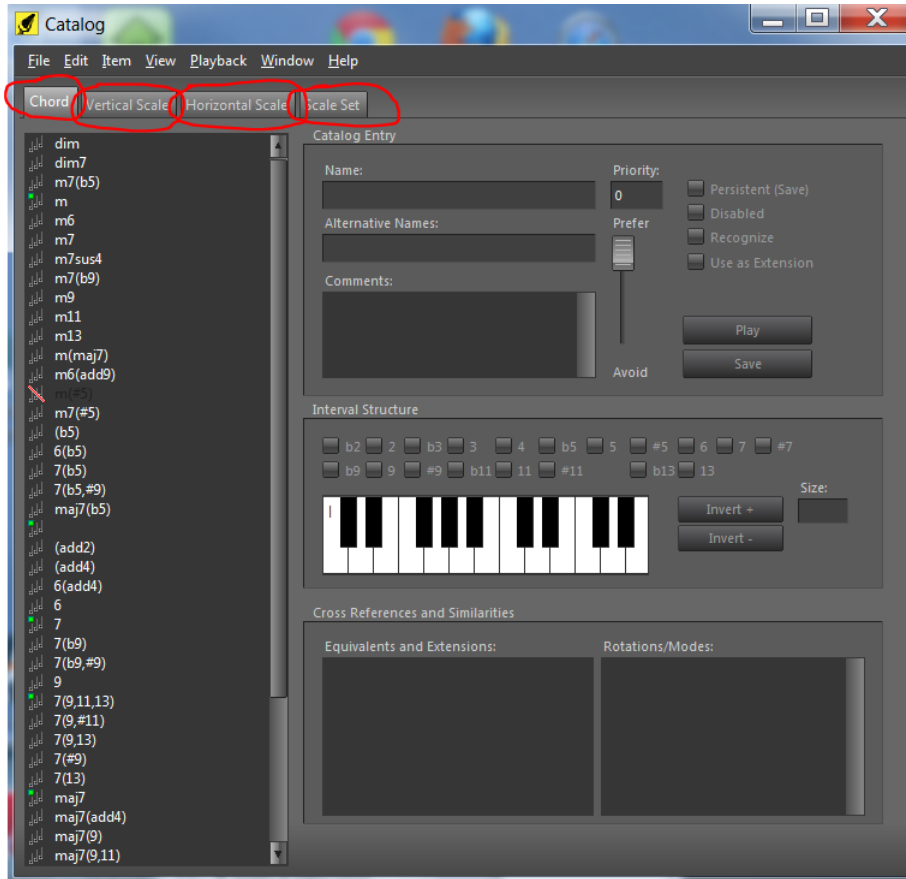
## Extract Progression window

Menu, File > Convert > Extract Progression =>



## Catalog of Chords and Scales window

Menu, Edit > Catalog of Chords and Scales =>



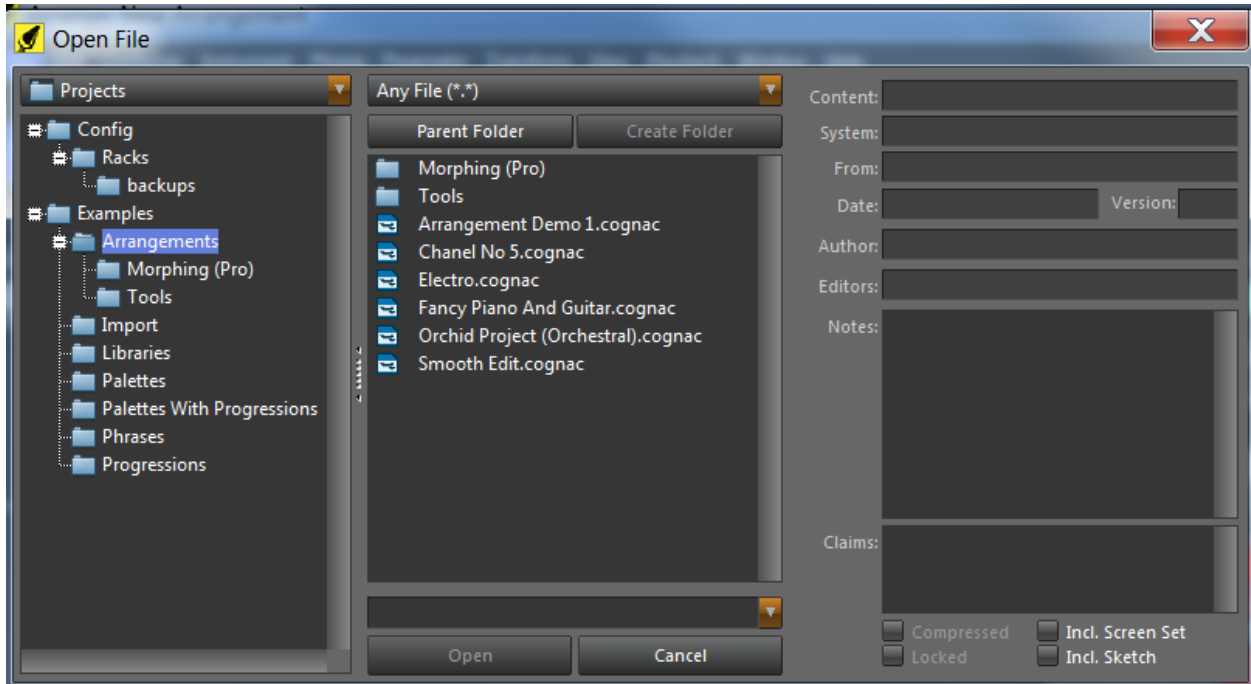
## Dialog Boxes

### Open dialog (open project, rack, libraries, palettes, phrases, files, ... )

Ctrl + O

OR

Menu, File > Open =>

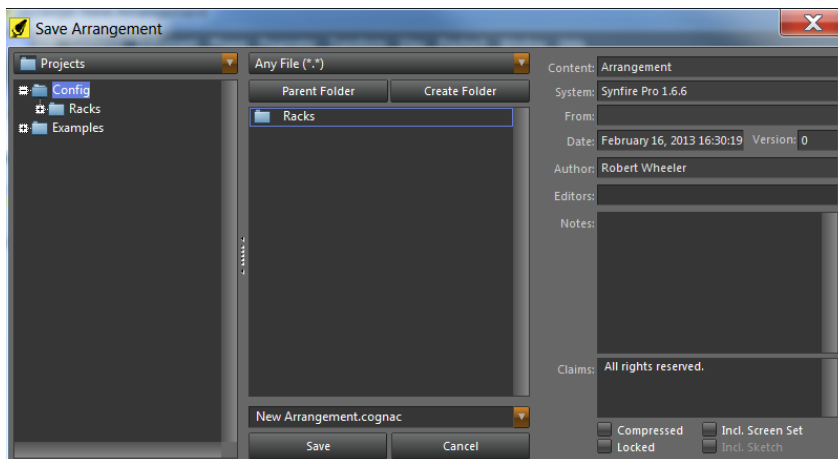


### Save dialog

Menu, File > Save =>

OR

Menu, File > Save as =>



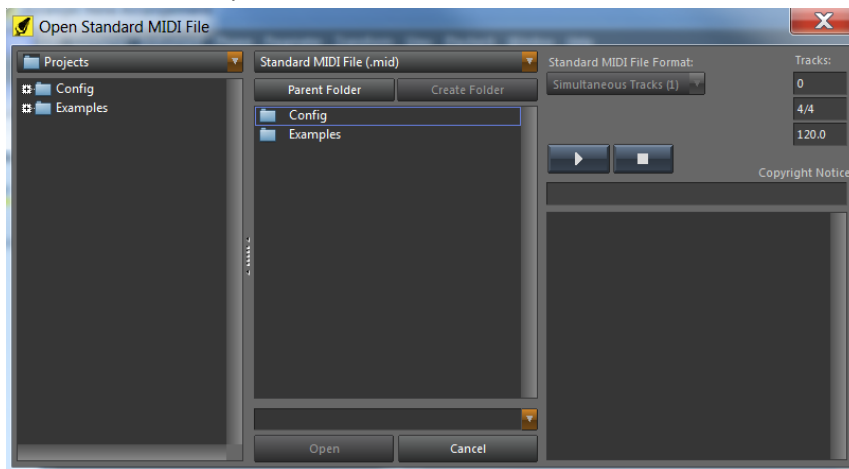


## Open MIDI file dialog

Menu, File > Import > Standard MIDI file =>

OR

Menu, Phrase > Import ... =>

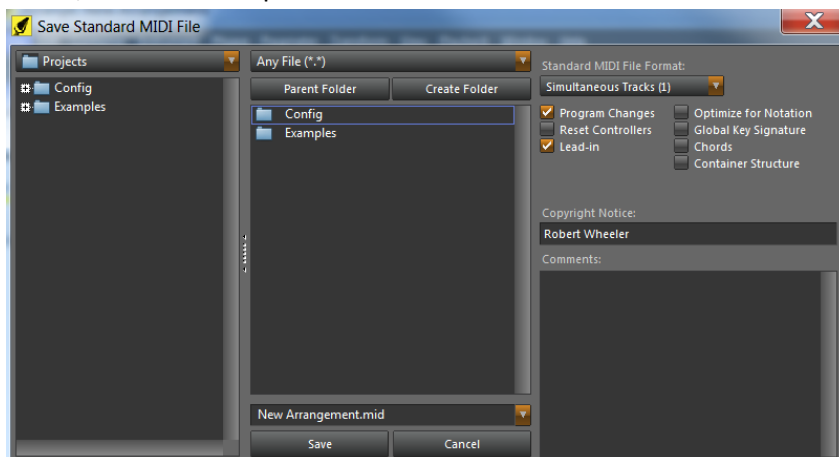


## Export MIDI file dialog

Menu, File > Export > Standard MIDI file =>

OR

Menu, Container > Export > Standard MIDI file =>

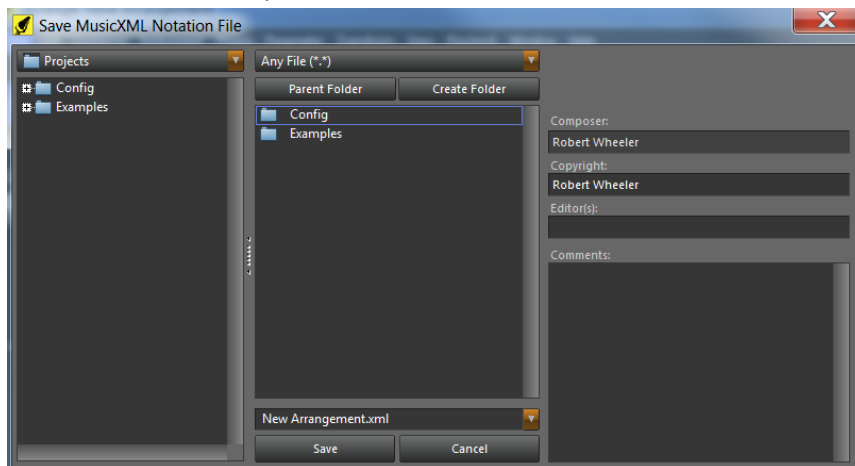


## Export MusicXML dialog

Menu, File > Export > Notation MusicXML... =>

OR

Menu, Container > Export > Notation MusicXML

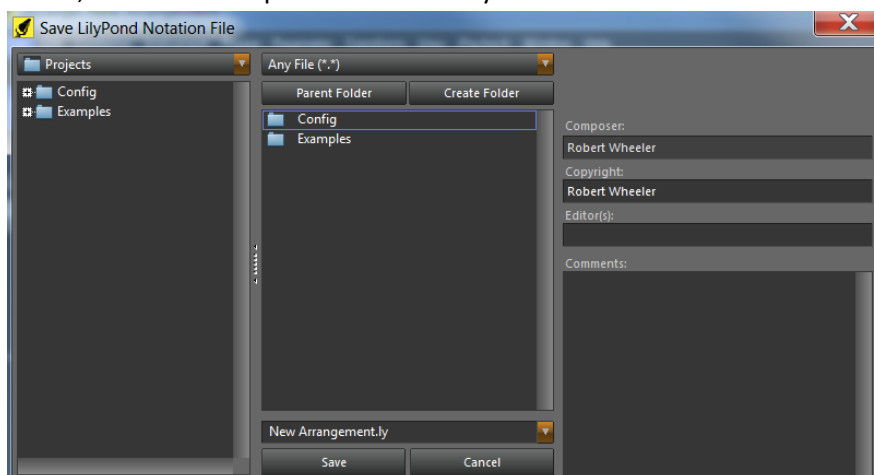


## Export LilyPond dialog

Menu, File > Export > Notation LilyPond ... =>

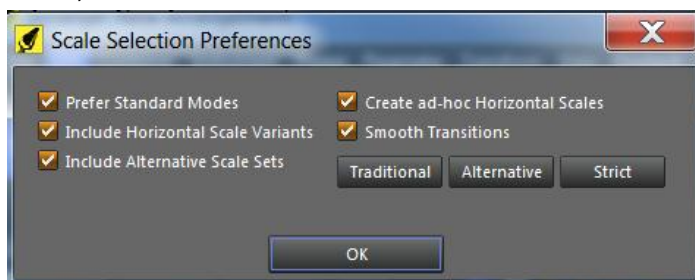
OR

Menu, Container > Export > Notation LilyPond =>



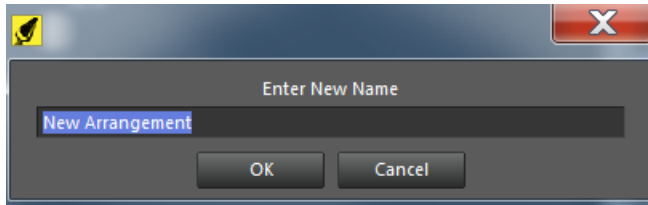
## Scale Selection Preferences dialog

Menu, Edit > Scale Selection Preferences =>



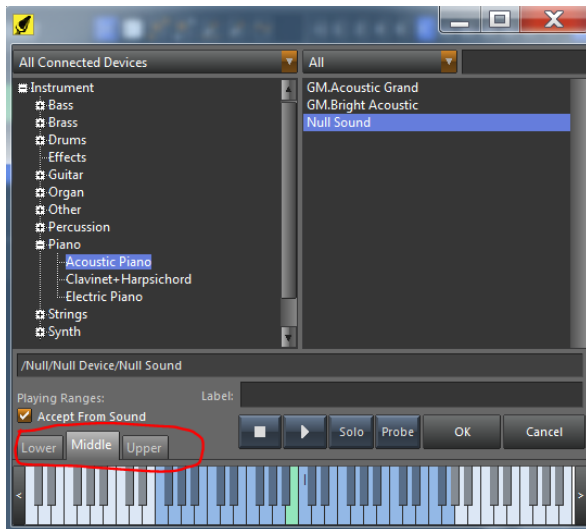
## Container Rename dialog

Menu, Container > Rename =>



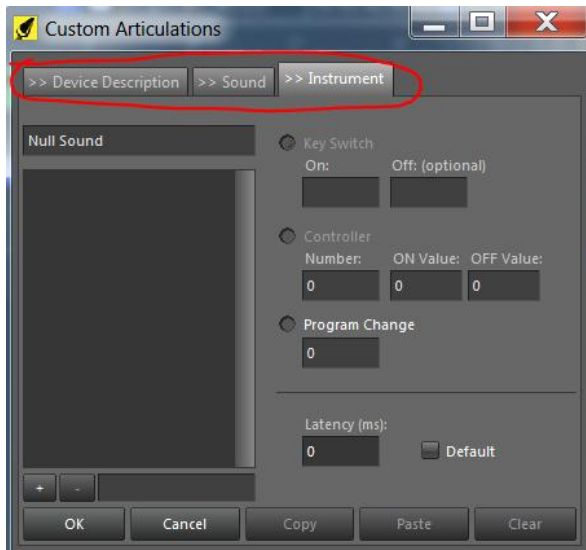
## Instrument Properties dialog

Menu, Instrument > Properties =>



## Instrument Articulations dialog

Menu, Instrument > Articulations =>

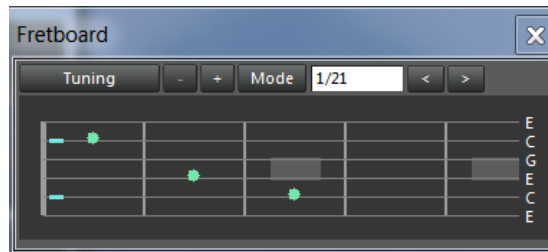
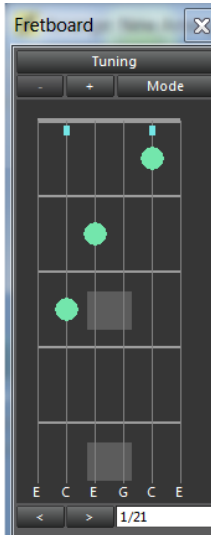




## Fretboard dialog

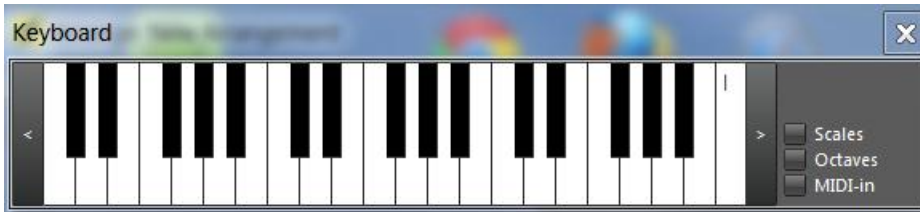
Menu, Window > String Instrument => OR

Menu, Window > String Instrument (landscape) =>



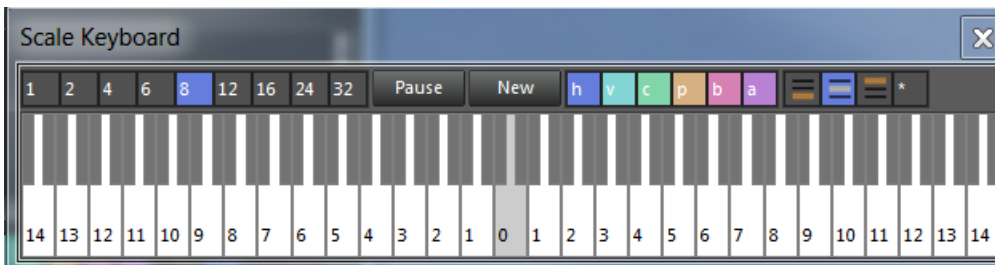
## Keyboard dialog

Menu, Window > Keyboard =>



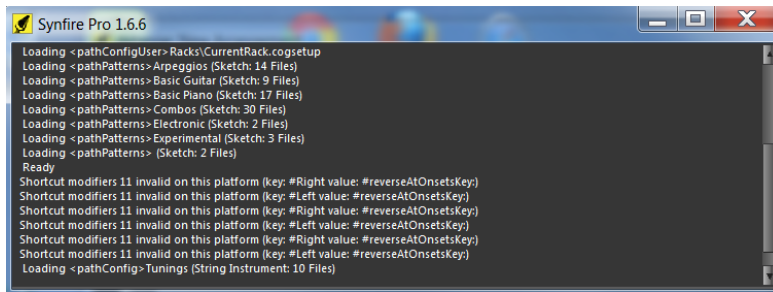
## Scaleboard dialog

Menu, Window > Scaleboard =>



## Console dialog

Menu, Window > Console =>



## About dialog

Menu, Help > About =>

